

THE INNOVATION AT EVERY STEP

ABOUT US

HydroNix Enviro Pvt Ltd, is Pune based Company Established in 2022 which offers Turnkey Solutions for Water & Waste Water Treatment for below Range. We can produly say that we can manufacture Premium Quality Plants.

- Sewage Treatment Plant (STP)
- Effluent Treatment Plant (ETP)
- Water Treatment Plant (WTP)
- Ultra-Filtration Plant (UF)
- Reverse Osmosis (RO)
- Demineralization Plant (DM)
- Cleaning Services
- All spares of Water & Waste Water Treatment Plants.

With its excellent Supply & Service Support, HydroNix Enviro Pvt Ltd can surely be your right partner for Successful implementation of your Project.

VISION

To be The Leader in Total Water & Wastewater segment, which is so essential to people's lives and the environment

MISSION

To be a universally respected high geared organisation offering sustainable solutions in water and the environment



WHY HEPL?

**SUPERIOR TECHNICAL
EXPERTISE**



**WIDE INDUSTRIAL
EXPERIENCE WITH
DESIGN & ENGINEERING
TEAM**



QUALITY PRODUCTS



**COST EFFECTIVE
PRODUCTS & SERVICES**



**EFFICIENT AFTER SALES
& SERVICES WITH 24/7
SUPPORT**



ON TIME DELIVERY



FILTRATION SYSTEM



We offer series of filters like Pressure Sand Filter, Activate Carbon Filter, Dual Media Filter, Iron Removal Filter in different sizes at a low cost, reliable and efficient way to filter impure water. It consists of different grades of sand, Activated Carbon, Anthracite, MnO₂ as per application. This plant used for Removal of suspended solids and turbidity, color and free chlorine in less quantity

SALIENT FEATURES

These filters are major part of treatment system it works as pre or post treatment systems in raw water treatment plants or waste water treatment plants respectively.

APPLICATIONS

Tertiary treatment for STP and ETP, usage in WTP.

ULTRA FILTRATION SYSTEM



Ultra Filtration is a membrane-based technology which is used for removal of suspended particles up to 0.01-micron size which results in SDI reduction. These membranes are available in 10 Kilo Daltons & 100 Kilo Daltons molecular weight cut off configuration as per the process requirements.

SALIENT FEATURES

- The UF Plant is simple to operate, easy to maintain, automatic operation, compact and has adequate safety interlocks.
- Pretreatment to RO
- Post treatment to waste water Treatment Plants- TSS/Turbidity Reduction.

APPLICATIONS

Industries such as Chemical and Pharmaceutical manufacturing, Food and Beverage processing and waste water treatment, employ ultra filtration in order to add values to later products.



REVERSE OSMOSIS SYSTEM

Reverse Osmosis systems are designed and manufactured to remove total dissolved solids (TDS) from raw water. We are using advanced membrane technology in our RO's to allow water to pass through a semipermeable membrane.

SALIENT FEATURES

- Low maintenance, User Friendly & easy to install
- PLC based automatic operation

APPLICATIONS

- Industrial Application
- Drinking purpose-Commercial & Residential



DEMINERALIZATION PLANT

Demineralization is the process of removing mineral salts from water by using the ion exchange process. The DM plant comprises of strong acid cation, strong base anion & mixed bed unit. This results in less than 15 micro-Siemens/cm conductivity.

SALIENT FEATURES

- User friendly, easy operation
- Low Power consumption

APPLICATIONS

- Boiler feed water in boilers ranging from low pressure to supercritical pressure.
- Industries such as Sugar, Power, Battery, Electroplating, Fertilizers, Pharmaceuticals, etc.

SEWAGE TREATMENT PLANT

Sewage treatment is the process of removing contaminants from waste water, primarily from household sewage. It includes physical, chemical, and biological processes to produce environmentally safe treated waste water & to reduce fresh water consumption.



TECHNOLOGIES INVOLVED ARE

- Activated Sludge Process – ASP
- Sequential Batch Reactor- SBR
- MBBR/MMBR/FMBR/FAB
- Membrane Bioreactor – MBR
- Submerged Aerobic Fixed Film Reactor- SAFF

APPLICATIONS

- Recycle, Reuse & Reduce
- User friendly, easy operation
- Packaged & Portable type
- High quality treated water
- Less Foot Print area



EFFLUENT TREATMENT PLANT

- We are having promising technologies to treat waste water generated from various industries containing highly organic, inorganic load, oil & grease, heavy metals and suspended solids. Based on the effluent parameters as per nature & compositions, we design steady state model to overcome environmental issues related to industry.
- The processes involved for the treatment of various effluents are anaerobic (UASBR, Anaerobic filter, biodigester), aerobic (diffused aeration), hybrid (anaerobic+aerobic).
- Our strength is to achieve the permissible limits of resultant treated water as per Government norms.

SALIENT FEATURES

- Manual, Semi-Automatic & Fully Automatic.
- Type- Batch & Continuous.
- Silent in operation.
- Sugar, Pharmaceutical, Electroplating
- Dairies, Paper & Pulp, Automobile
- Food processing, Chemical, Paint

ZERO LIQUID DISCHARGE

Zero liquid discharge is a process that is beneficial to industrial and municipal organizations as well as the environment because it saves money and no effluent, or discharge, is left over. ZLD systems employ the most advanced waste water treatment technologies to purify and recycle virtually all of the wastewater produced. Also, zero liquid discharge technologies help plants meet discharge and water reuse requirements, enabling businesses to:

A Zero liquid discharge facility (ZLD) is an industrial plant without discharge of waste waters. Target ZLD is normally reached by Waste water recovery Evaporating reject water in multiple effect evaporator, crystallizers and ATFD.

APPLICATIONS

- Textile Industries, Pharmaceutical Industries
- Distilleries, Chemical Industries

SALIENT FEATURES

- High efficiency, Sturdy design, Less maintenance
- Quick to install
- Compact Design
- Highest Steam Economy



BIO CULTURE & WATER TREATMENT CHEMICALS

1. OXY-SUPER

(A GRANULAR POWDER THAT ENHANCES BIODEGRADATION)

BENEFITS

- Promotes growth of new beneficial microbes Provides Immediate reduction in
- Odors, BOD , COD
- Most cost effective wastewater treatment bioinput
- Adjusts pH Value.
- Binds the suspended solids and reduces the turbidity.
- Regular use eliminates Ammonia, Sulphide and other obnoxious gasses.
- Wide range of applications

2. SUPER-24

(POWDERED FORMULATION OF BENEFICIAL MICROBES AND FAST ACTING ENZYMES WITH ESSENTIAL NUTRIENTS TO PROVIDE ACCELERATED DEGRADATION IN STPS AND ETPS)

BENEFITS

- Eliminates need to add EM , UREA, DAP.
- Balances the C: N ratio of wastewater.
- Promotes healthy and well settling biomass.
- Reduces Sludge , Eliminates filamentous bulking.
- Neutralizes Detergents, dyes, pigments and a range of industrial chemicals.
- Reduces TDS and hardness.
- Works well in both aerobic and anaerobic environments in varying parameters like Hardness, Salinity, pH etc., over a wide range of targets.
- Acts as a deodorant. Adsorbs obnoxious gases like Ammonia, H₂S, Mercaptans.



DIFFUSER MEMBRANE

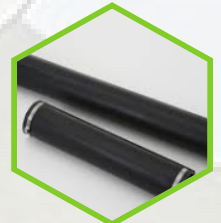
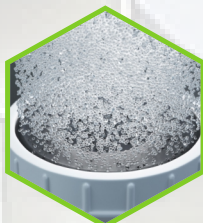
An air diffuser or membrane diffuser is an aeration device typically in the shape of a disc, tube or plate, which is used to transfer air and with that oxygen into the sewage or industrial wastewater. Oxygen is required by microorganisms/bacteria residents in the water to break down the pollutants.

FINE BUBBLE DISC DIFFUSER

SR NO	DESCRIPTION	TPE-225	TPE-300
1	RUBBER MEMBRANE MATERIAL	EPDM/Silicon	EPDM/Silicon
2	AERATION SURFACE AREA	0.0397m ²	0.068m ²
3	BUBBLE DAIMETER	1-3mm	1-3mm
4	MEMBRANE SERVICE LIFE	> 5 years	> 5 years
5	STANDARD AERATION RATE	3.5 m ³ / h	6 m ³ / h
6	AERATION SCOPE	1-6m ³ / h	1-8 m ³ / h
7	OPERATING TEMPERATURE	80°C	80°C
8	MAXIMUM INTERVAL, C/C	1.5/0.4 m	1.5/0.4 m
9	DIFFUSER WEIGHT	0.590 Kg	0.860 kg

TUBE DIFFUSER MEMBRANE

SR NO	SIZE	TYPE	MEMBRANE	DESIGN FLOW	CONNECTION	SUPPORT DISC	RETAINING CLAMP
1	90mm X 1000mm	TUBULAR	EPDM & SILICON	5M ³ /hr 12M ³ /hr	1"NPT FEMALE	OPEN END DESIGN ONE PIECE MOULDED PVC	STAINLESS STEEL AISI 304
2	63mm X 1000mm	TUBULAR	EPDM & SILICON	3M ³ /hr 9M ³ /hr	3/4"NPT FEMALE	OPEN END DESIGN ONE PIECE MOULDED PVC	STAINLESS STEEL AISI 304
3	63mm X 610mm	TUBULAR	EPDM & SILICON	2M ³ /hr 5.5M ³ /hr	3/4"NPT FEMALE	OPEN END DESIGN ONE PIECE MOULDED PVC	STAINLESS STEEL AISI 304



PRODUCT-PORTFOLIO

- FILTRATION PLANT (PSF/ACF/IRF)
- SEWAGE TREATMENT PLANT (STP)
- ULTRAFILTRATION PLANT
- EFFLUENT TREATMENT PLANT (ETP)
- REVERSE OSMOSIS PLANT
- ZERO LIQUID DISCHARGE PLANT (ZLD)
- SOFTNER PLANT
- BIO-CULTURE & WATER TREATMENT CHEMICALS
- DEMINERALIZATION PLANT
- REVAMPING & AMC CONSULTANCY

CLIENTELE



HydroNix Enviro Pvt Ltd

MUMBAI OFFICE- A603, Bldg. No 19, Siddhivinayak CHS, Tilak Nagar, Chembur, Mumbai – 400089 Maharashtra, India

PUNE OFFICE- Flat No B-1205 Tanish Orchid Azad Nagar Charoli Bk Pune-412105

☎ 91+7044-19-7044 | 91+7044-64-7044

✉ info@hydronixenviro.com
sales@hydronixenviro.com

🌐 www.hydronixenviro.com



Scan For Website

